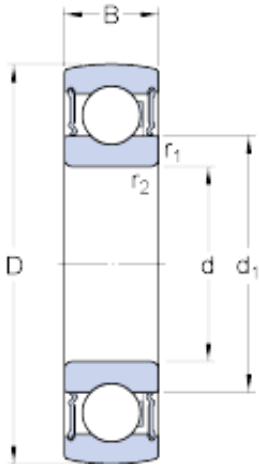




## SNR Bearing Argentina



60 mm x 110 mm x 22 mm skf 1726212-2RS1  
Insert bearings (Y-bearings)

Bearing No. 1726212-2RS1

1726212-2RS1 Bearing 2D drawings and 3D CAD models

Size	110x60x22 mm
Bore Diameter	110 mm
Outer Diameter	60 mm
Width	22 mm
d	60 mm
D	110 mm
B	22 mm
d <sub>1</sub>	75.5 mm
r <sub>1,2</sub> - min.	1.5 mm
Basic dynamic load rating - C	52.7 kN
Basic static load rating - C <sub>0</sub>	36 kN
Fatigue load limit - P <sub>u</sub>	1.5 kN
Limiting speed	4000 r/min
Calculation factor - f <sub>0</sub>	14
Category	Insert Bearings Spherical OD
Inventory	0.0
Manufacturer Name	SKF
Minimum Buy Quantity	N/A
Weight / Kilogram	0.75
EAN	7316570435030
Product Group	M06110
Inner Race Profile	Standard Inner Ring
Outer Race Profile	Spherical



## SNR Bearing Argentina

Relubricatable	No
Seal Type	RS1 Seal
Mounting Method	Shaft Mount
Rolling Element	Ball Bearing
Snap Ring	No
Long Description	60MM Bore; Standard Inner Ring; Ball Bearing; 22MM Length Thru Bore; 22MM Outer Race Width; 110MM Outside Diameter; Not Relubricatable; RS1 Seal Seal; Shaft Mount Mounting Method; No Snap Ring
Inch - Metric	Metric
Other Features	Single Row   Standard Duty   Metric
Category	Insert Bearings
UNSPSC	31171536
Harmonized Tariff Code	8482.10.50.00
Noun	Bearing
Keyword String	Insert
Manufacturer URL	<a href="http://www.skf.com">http://www.skf.com</a>
Manufacturer Item Number	1726212-2RS1
Weight / LBS	1.65
Bore	2.362 Inch   60 Millimeter
Outside Diameter	4.331 Inch   110 Millimeter
Length Thru Bore	0.866 Inch   22 Millimeter
Outer Race Width	0.866 Inch   22 Millimeter
bore diameter:	60 mm
radial static load capacity:	36 kN
outside diameter:	110 mm
finish/coating:	Uncoated
outer ring width:	22 mm
maximum rpm:	4000 RPM
bore type:	Round



## SNR Bearing Argentina

seal type:	Contact/Lip
operating temperature range:	-40 to +210 ° F
series:	17262
radial dynamic load capacity:	52.7 kN
$d_1$	75.5 mm
$r_{1,2}$ min.	1.5 mm
Basic dynamic load rating C	52.7 kN
Basic static load rating $C_0$	36 kN
Fatigue load limit $P_u$	1.53 kN
Limiting speed <sup>1)</sup>	4000 r/min
Calculation factor $f_0$	14
Mass complete bearing	0.77 kg